

# The Lady In Red

Words and Music by CHRIS DE BURGH

**INTRO**

B $\flat$  B $\flat$ /D E $\flat$ maj7

**VERSE**

F B $\flat$  E $\flat$ maj7

1. I've nev - er seen you look - ing so love - ly as you did — to - night,  
nev - er seen you look - ing so gor - geous as you did — to - night,

F9 D7 D/F# Gm

I've nev - er seen you shine so — bright,  
I've nev - er seen you shine so — bright,

F E $\flat$

mm you mm were mm a - maz - ing. I've I've

Bb Ebmaj7

nev - er seen so ma - ny men ask — you if you want-ed to dance, —  
 nev - er seen so ma - ny peo - ple want to be there — by your side, —

F9 D7 D/F# Gm

— they're look-ing for a lit - tle ro - mance,  
 — and when you turned to me and smiled, — it

Bb7/F Eb

giv - en half — a chance, and I have  
 took my breath a - way, — and I have

Cm

nev - er seen that dress you're wear - ing, or the  
 nev - er had — such a feel - ing, such a

F7



high - lights in your hair that catch your eyes,  
 feel - ing of com - plete and ut - ter love,

Gm



F



CHORUS

I have been blind. The  
 as I do to night.

F/Eb



Bb



Bbmaj7/D



la - dy in red

Fb9



F



Gm



F/A



is danc - ing with me, cheek to cheek,

Gm Gm/D Cm

there's no - bo - dy here, —

This system contains the first line of music. It features a vocal line with a treble clef and a piano accompaniment with grand staff notation. The key signature has two flats. Chord diagrams are provided for Gm, Gm/D, and Cm. The lyrics are "there's no - bo - dy here, —".

F7 Bb

it's just you and me, — it's where I wan - na be,

This system contains the second line of music. It features a vocal line with a treble clef and a piano accompaniment with grand staff notation. The key signature has two flats. Chord diagrams are provided for F7 and Bb. The lyrics are "it's just you and me, — it's where I wan - na be,".

Bb7 Eb

but I hard - ly know —

This system contains the third line of music. It features a vocal line with a treble clef and a piano accompaniment with grand staff notation. The key signature has two flats. Chord diagrams are provided for Bb7 and Eb. The lyrics are "but I hard - ly know —".

D/F# D Gm Gm/F

this beau - ty by my side, —

This system contains the fourth line of music. It features a vocal line with a treble clef and a piano accompaniment with grand staff notation. The key signature has two flats. Chord diagrams are provided for D/F#, D, Gm, and Gm/F. The lyrics are "this beau - ty by my side, —".

Gm/E



Cm7



I'll ne - ver for - get

F



1.

Bb



the way you look — to - night. —

Ebmaj7



Bb



Bb/D



Ebmaj7



F



2.

Gm



2. I've way you look — to - night, —

Gm/F



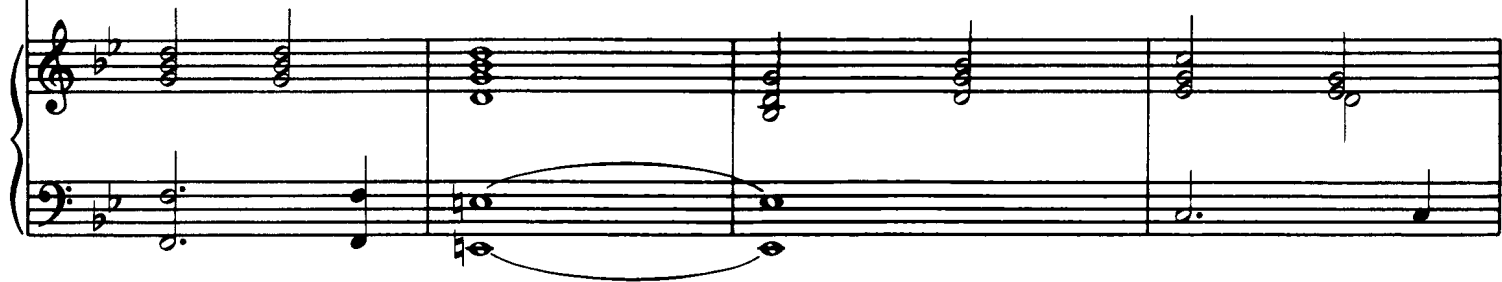
Gm/E



Cm7



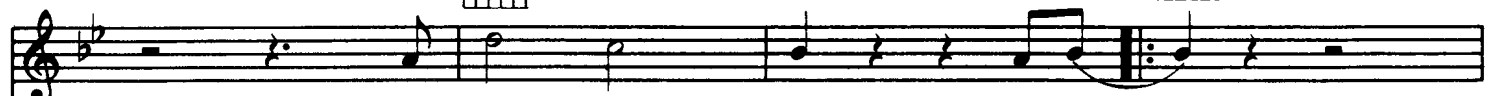
I nev - er will for - get



F7



Bb



the way you look to - night.



Bb/D



Ebmaj7



F



Bb



x3



The la - dy in red,



Bb/D



Ebmaj7



F



Bb



my la - dy in red.



all