

The Lady In Red

Words & Music by Chris De Burgh

INTRO

VERSE

1. I've nev - er seen you look - ing so love - ly as you did — to - night,
nev - er seen you look - ing so gor - geous as you did — to - night,

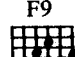

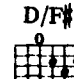
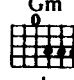
I've nev - er seen you shine so — bright,
I've nev - er seen you shine so — bright,

mm you were a - maz - ing. I've I've

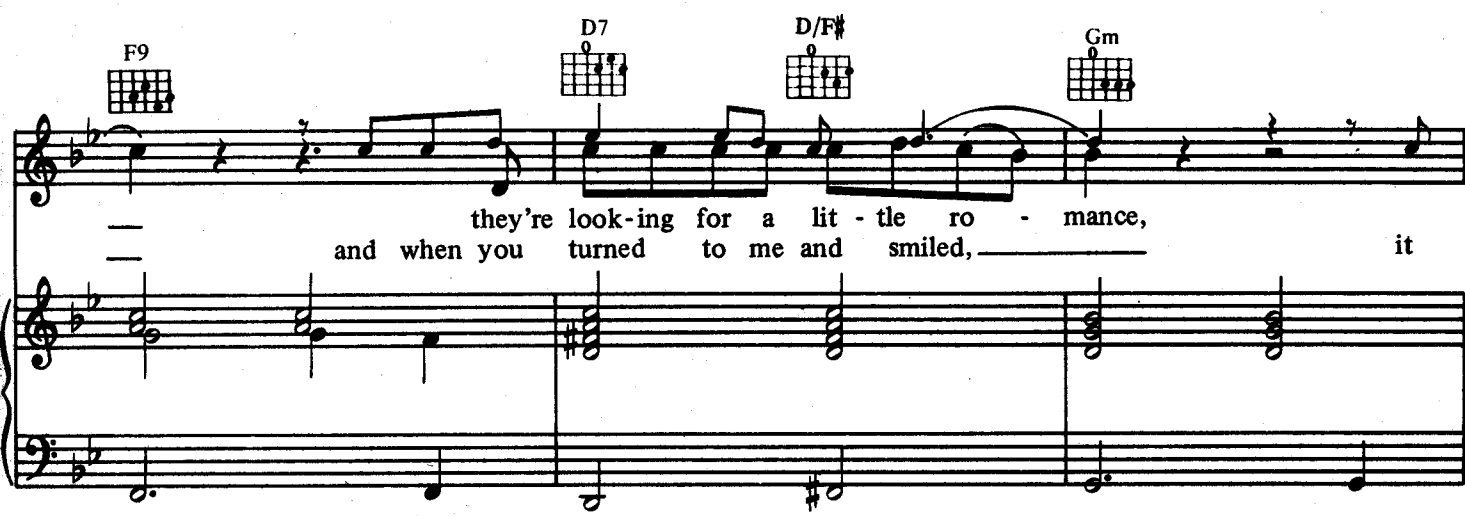
Bb  Ebmaj7 

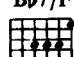
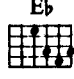
nev - er seen so ma - ny men ask you if you want-ed to dance,
 nev - er seen so ma - ny peo - ple want to be there by your side,



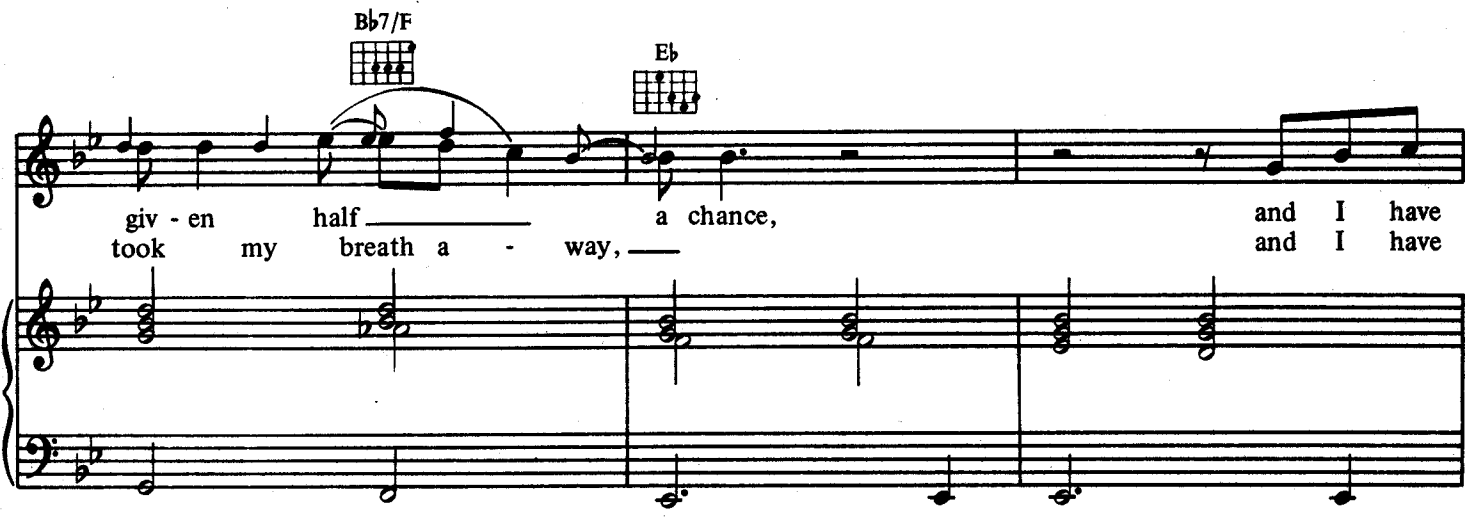
F9  D7  D/F#  Gm 

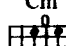
— they're look-ing for a lit - tle ro - mance,
 — and when you turned to me and smiled, it



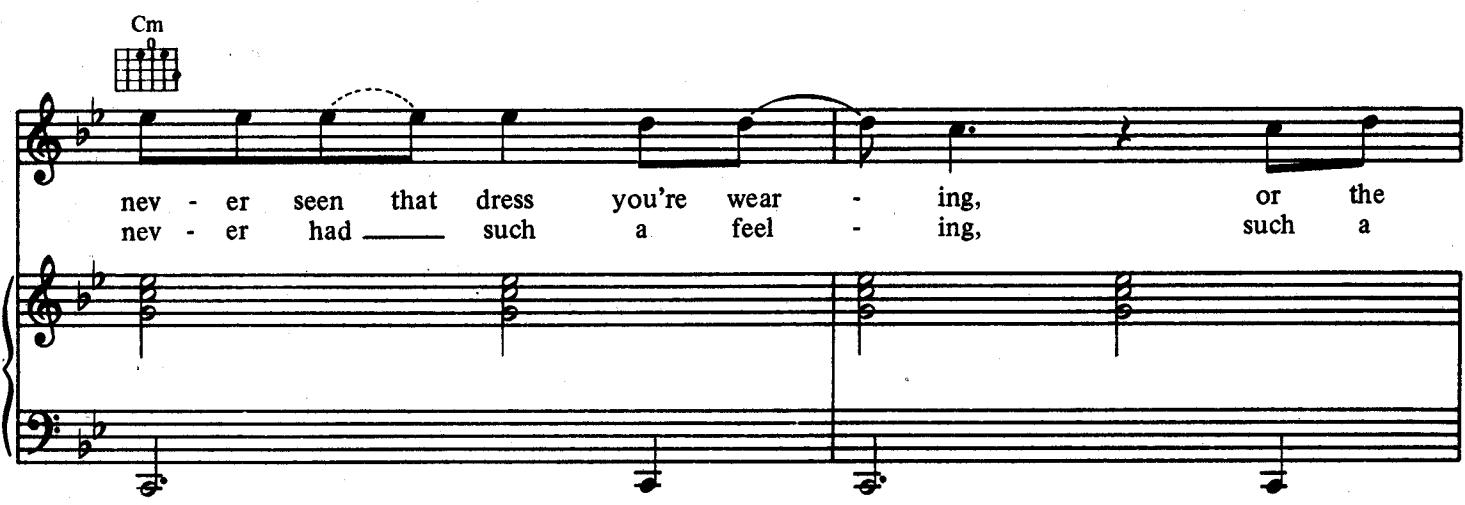
Bb7/F  Eb 

giv - en half a chance, and I have
 took my breath a - way, and I have



Cm 

nev - er seen that dress you're wear - ing, or the
 nev - er had such a feel - ing, such a



F7



high - lights in your hair that catch your eyes,
 feel - ing of com - plete and ut - ter love,

Gm



F



CHORUS

I have been blind. The
 as I do to night.

F/Eb



Bb



Bbmaj7/D



la - dy in red

Fb9



F



Gm



F/A



is danc - ing with me, cheek to cheek,

Gm Gm/D Cm

there's no - bo - dy here, —

F7 Bb

it's just you and me, — it's where I wan - na be,

Bb7 Eb

but I hard - ly know —

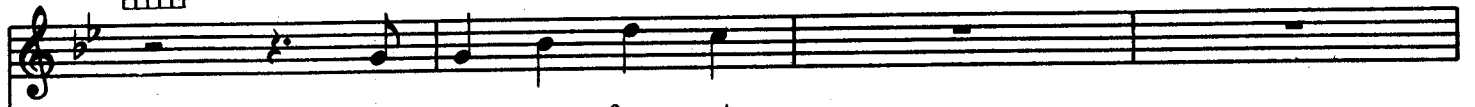
D/F# D Gm Gm/F

this beau - ty by my side, —

Gm/E



Cm7



I'll ne - ver for - get



F

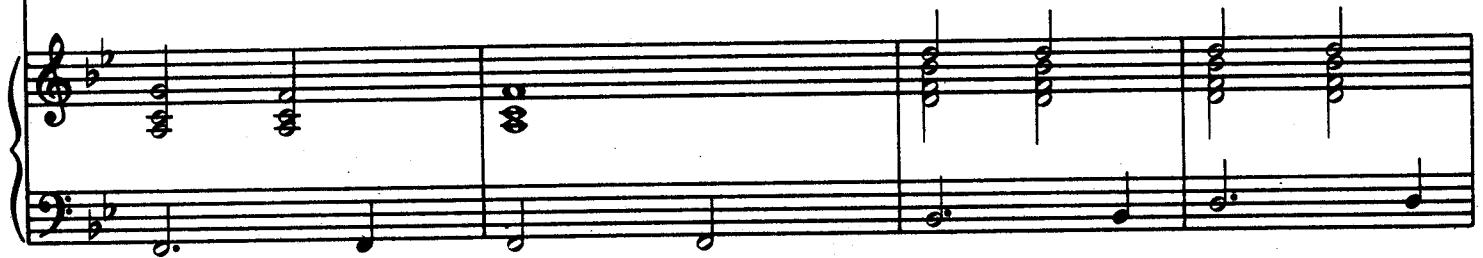


1.

Bb



the way you look — to - night. —



Ebmaj7



Bb



Bb/D



Ebmaj7



F



2.

Gm



2. I've way you look — to - night, —



Gm/F



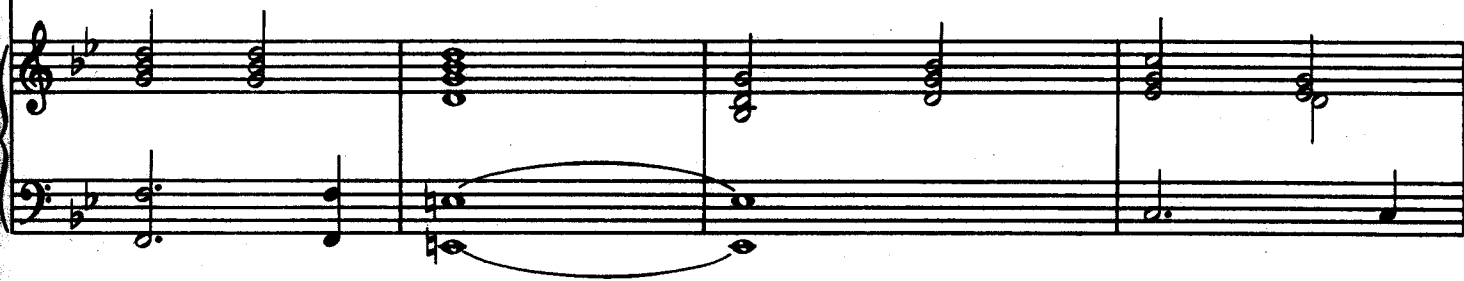
Gm/E



Cm7



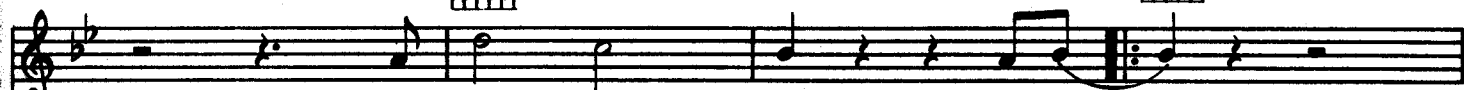
I nev - er will for - get



F7



Bb



the way you look to - night



Bb/D



Ebmaj7



F



Bb



x3



The la - dy in red,



Bb/D



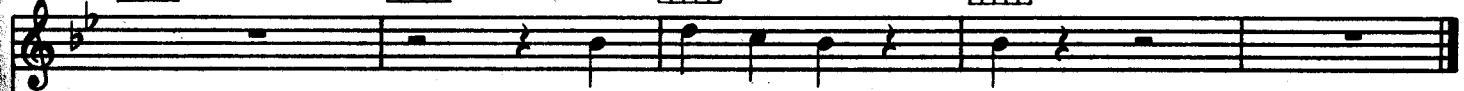
Ebmaj7



F



Bb



my la - dy in red.

